



ESTAR
Supporting People into Learning & Work

**>SKILLS
& EMPLOYMENT
EAST SUSSEX**



Labour Market Information Bulletin

May - June 2025

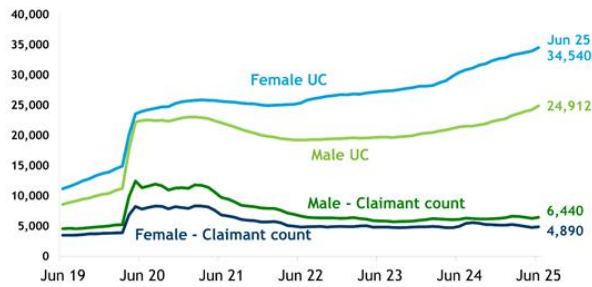
East Sussex Claimant Statistics

-
- *Total number claiming Universal Credit (UC) any conditionality – **58,180** (May) and **59,451** (June)*
 - *Total claiming UC any conditionality as % of the working-age population – **17.9%** (May), and **18.3%** (June)*
 - *Number of claimants of UC searching for work/Job Seekers Allowance – **11,065** (May) and **11,330** (June)*
 - *UC/JSA searching for work % of the working-age population – **3.5%** (May) **3.6%** (June)*
-

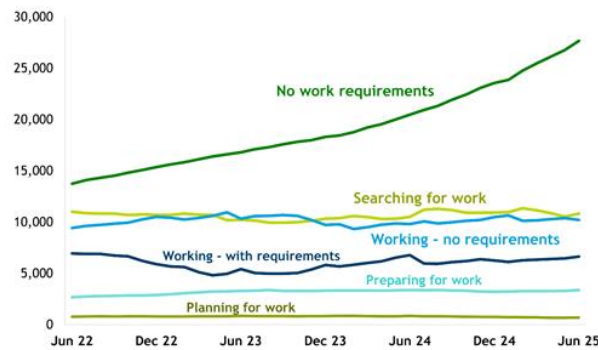
Source: [East Sussex in Figures \(ESiF\)](#)

Universal Credit claimant graphs

All UC claimant rates living in East Sussex by conditionality and sex to June 2025 Source: East Sussex in Figures (ESiF)



All UC claimant rates living in East Sussex by conditionality to June 2025 Source: East Sussex in Figures (ESiF)



What is Universal Credit?

Universal Credit is a single payment for each household to help with living costs for those on a low income or out of work. It is replacing 6 previous benefits, commonly referred to as the legacy benefits. Support for housing costs, children and childcare costs are integrated into Universal Credit. It also provides extra support for people with a disability, health condition, or caring responsibilities which may stop them from working.

All people on Universal Credit are placed into one of six conditionality groups, depending on their personal circumstances. Which of these groups they are placed into will determine what activities they are required to do (if any) as part of their claim and the level of contact and support they receive.

As people move across from legacy benefits, the composition of people on Universal Credit continues to change. At first, Universal Credit was only available to working age individuals with no children who were seeking employment. Over time, Universal Credit was made available to people in different circumstances, including those migrating over from health-related legacy benefits.

You can read more about Universal Credit and the national statistics [here](#)

East Sussex Vacancy Statistics

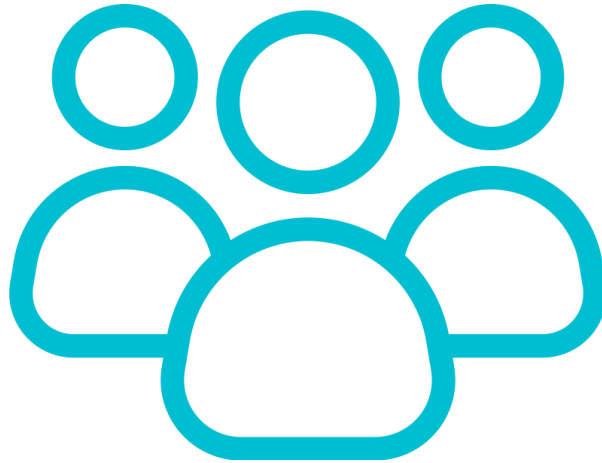


Vacancies (unique job postings) by District for May 2025 – June 2025*

- Lewes: 3,573
 - Wealden: 3,497
 - Eastbourne: 2,581
 - Hastings: 2,189
 - Rother: 1,525
-

**Unique job postings are those being advertised for the first time, not ones that have been advertised more than once already.*

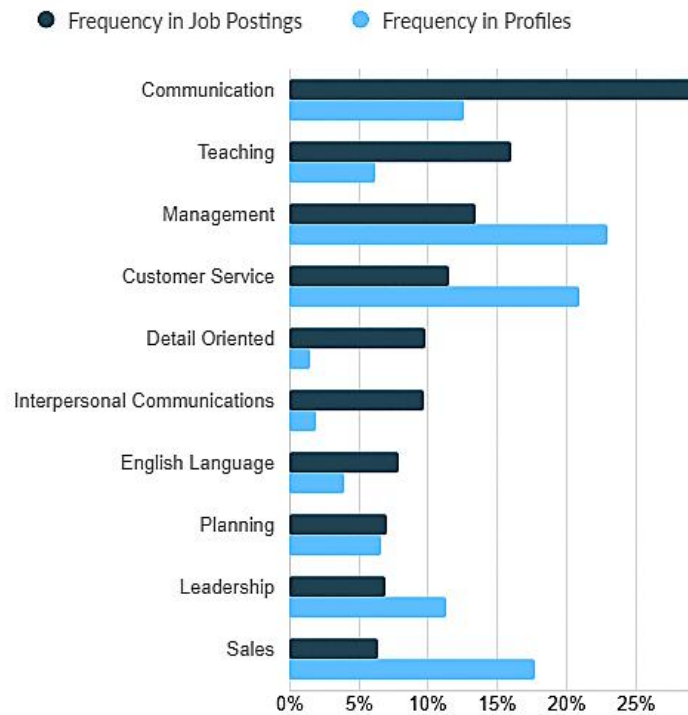
Top 5 Posted Job Titles in East Sussex May 2025 – June 2025



-
- *Support Workers*
 - *Teaching Assistants*
 - *Care Assistants*
 - *Primary Teachers*
 - *Cleaners*
-

Skills demand in East Sussex

Top Common Skills



The Skills demand shows the frequency of the top common skills appearing in job adverts as compared to those appearing in workforce profiles (CVs). These diagrams show that while many employers may be asking for a certain skill, the CVs or workforce profiles available to them do not always necessarily match the skills that they are looking for.

The top common Skills are skills that are common across many different occupations and industries, including both personal attributes and learned skills. (e.g. "Communication" or "Microsoft Excel"). Also known as soft skills, human skills, and competencies.

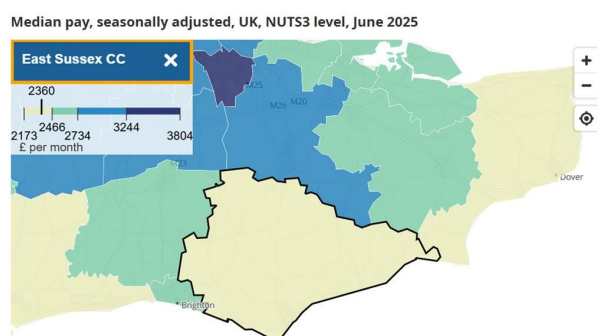
Source: [Lightcast](#)

Job Postings Nationally May 2025 – June 2025



-
- *London* 348,339
 - *South East* 312,657
 - *North West* 209,609
 - *South West* 190,910
 - *East of England* 187,839
-

Monthly Median Pay in East Sussex



Monthly median pay (the middle pay, where 50% earn more and 50% earn less) in East Sussex: £2,360 per month using the HM Revenue and Customs Pay As You Earn Real Time Information in June 2025.

Source: [Earnings and employment from Pay As You Earn Real Time Information, UK - Office for National Statistics](#)

National Employment Picture

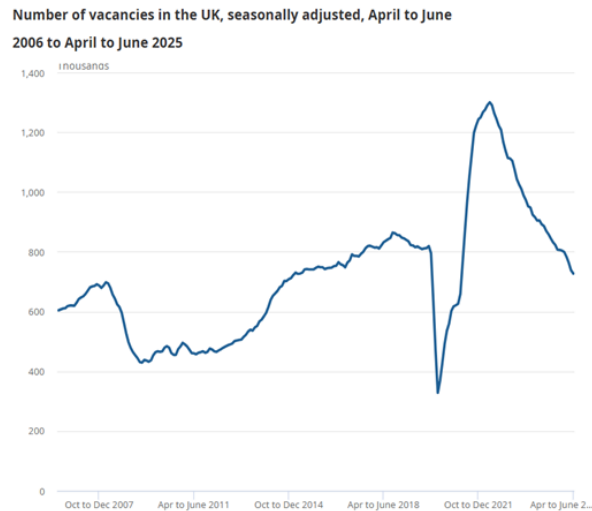


Early estimates for June 2025 indicate that there were 30.3 million payrolled employees, which is a decrease of 0.6% compared with the same period of the previous year. This is a decline of 178,000 employees over the 12-month period. Compared with the previous month, the number of payrolled employees decreased by 0.1% in June 2025, a decrease of 41,000 people.

The estimated number of vacancies fell by 56,000 (7.2%) to 727,000 in April to June 2025. Vacancy numbers have now been falling continually for three years, with the total number of vacancies decreasing by an estimated 573,000 since its peak in March to May 2022. Feedback from our Vacancy Survey suggests some firms may not be recruiting new workers or replacing workers who have left.

Total vacancies decreased by 143,000 (16.5%) when comparing April to June 2025 with the same period last year. There were declines in 17 of the 18 industry sectors. The industry with

the largest percentage decrease in vacancies was the other service activities industry, which was down by 33.9%.



Source: [Vacancies and jobs in the UK - Office for National Statistics \(ons.gov.uk\)](https://ons.gov.uk)

Focus on – Connect to Work and Skills Bootcamps

Two new employability programmes have launched in East Sussex. Connect to Work focuses on supporting people into work and helping them stay in work. Skills Bootcamps equip adults with the skills to get a job or help further their career. Both programmes are voluntary, with the participants wanting to work or get skilled.

Connect to Work

CONNECT TO WORK

Funded by **UK Government**

Connect to Work aims to support residents into work by linking them with a dedicated employment specialist who can help to:

- Identify their strengths, needs, and employment goals.
- Create and work through an employment action plan.
- Find a job that matches individual skills and interests.
- Engage with local employers, including on and off the job support.

- Integrate employment support with other needs, such as health services.

Connect to Work will help people to get into work and address challenges that prevent access to employment. Participants may have a disability, long-term health condition, or experience other challenges. Connect to Work will also help people to stay in roles when they are at risk of losing their current job.

To be eligible for Connect to Work, you must:

- Be 18+.
- Have the right to work and live in the UK.
- Not already be on a DWP employment programme.

For more information about Connect to Work visit - [Connect to Work - Supported Employment Programme](#)

Subscribe to the [ESTAR mailing](#) list or follow us on [Facebook](#) or [X](#) for more updates.

Skills Bootcamps

Funded by the Department for Education, Skills Bootcamps are short, flexible, vocational courses for adults aged 19+. It will give them an accredited qualification or core elements of an accredited qualification for a particular job or sector, plus core employability skills.

In East Sussex, Skills Bootcamps are available in the following sectors:

- Construction and the Built Environment
- Digital Skills
- Education and Early Years
- Land-based
- Business and Administration
- Hospitality
- Health and Social Care

Coming soon

- Engineering and Manufacturing

Bootcamps are for anyone wanting to secure employment, progress in their current role, move into a new career, or secure new opportunities if they are self-employed.

For more information about Skills Bootcamps visit - [Skills Bootcamps](#)

SKILLS FOR LIFE

SKILLS BOOTCAMPS

And finally!



Earlier this month, Skills England published its **Assessment of Priority Skills to 2030 report**, offering a forward-looking view of the UK's employment landscape. The report identifies which jobs will be most in demand across ten key sectors and outlines the types of training needed to meet that demand.

Developed with input from leading industry departments, the report uses Standard Occupation Classification (SOC) codes to ensure consistency. It highlights priority occupations and the qualifications required, ranging from Level 2 and 3 to higher technical and degree-level pathways.

While the report doesn't cover every emerging or specialist role and soft skills like leadership are not fully addressed, it provides a solid foundation for planning future training investments. It's designed to help employers, educators and policymakers align efforts and resources with the UK's evolving skills needs.

Key Sectors Covered:

- Digital Technologies
- Health and Social Care
- Engineering and Manufacturing

- Construction
- Transport and Logistics
- Creative, Cultural, Media and Digital
- Education and Early Years
- Professional and Business Services
- Green Industries and Land-Based Sectors
- Adult Social Care

Highlights:

- Over 250,000 people enter priority occupations each year.
- One-third of future roles will require Level 2/3 qualifications; the rest will need higher-level training.
- Skills England is working with employers to co-create training programmes and respond to changes like AI disruption.

For more details, you can read the full report here [Assessment of priority skills to 2030 - GOV.UK](#)

Further useful LMI and Careers resources



- LMI For All - [Explore LMI data – LMI For All](#)
- Careers Hub - [Careers > East Sussex \(careerseastsussex.co.uk\)](#)
- Advice for Young People making choices [Young People \(careerseastsussex.co.uk\)](#)

- Advice for helping a child making choices - [Careers > East Sussex \(careerseastsussex.co.uk\)](#)
 - East Sussex in Figures (ESIF) - East Sussex in Figures – Data Observatory – Welcome to East Sussex in Figures
 - Office for National Statistics - [Labour market overview, UK Statistical bulletins - Office for National Statistics \(ons.gov.uk\)](#)
 - Government funded training - [Free courses for jobs - GOV.UK \(www.gov.uk\)](#)
 - TRANSFORM Service - [TRANSFORM Service | East Sussex County Council](#)
-

Subscribe to the Skills East Sussex (SES) Newsletter to stay updated on the work being done by Skills East Sussex and its partners. The newsletter is dedicated to celebrating success, sharing valuable information and guidance, discussing important topics, and issuing calls to action for everything related to employability and skills in East Sussex. Don't miss out on the latest news and opportunities—[sign up today!](#)

Additionally, you can also follow the [Skills East Sussex LinkedIn page](#) to connect with our community and stay engaged with all the latest updates and discussions.

Note on economic inactivity given by the ONS:

1. Other reasons for being economically inactive include those who are waiting for the results of a job application, those who have not yet started looking for work, those who do not need or want employment, those who have given an uncategorised reason for being economically inactive, or those who have not given a reason for being economically inactive.
-

Found this newsletter useful? Has it been forwarded to you? [Subscribe here](#) to receive all our updates.

If you no longer wish to receive this newsletter [click to unsubscribe](#)
