

UK Education Levels and Qualifications

Education and training options for 16-18 year-olds



LEVEL	ENTRY REQUIREMENTS	QUALIFICATIONS	PROGRESSION TO
Pre-Entry and Foundation Learning	Appropriate level of skills and 'college readiness' assessed at interview	<ul style="list-style-type: none"> ■ Life Skills Course ■ Level 1 Diploma 	<ul style="list-style-type: none"> ■ Entry Level course ■ Level 1 or 2 course
1.	<ul style="list-style-type: none"> ■ At least two GCSEs at grade 9-2 (A*-F) or achievement of an Entry Level qualification (to include English and maths or be able to demonstrate the ability to work at the appropriate level) 	<ul style="list-style-type: none"> ■ NVQ Level 1 ■ BTEC/UAL Level 1 (certificate) ■ Pre-apprenticeship programme 	<ul style="list-style-type: none"> ■ Level 2 course ■ Intermediate Apprenticeship ■ Employment
2.	<ul style="list-style-type: none"> ■ At least three GCSEs grade 9-3 (A*-D/E) or successful completion of a Level 1 course ■ Most require English and maths. Some require a basic knowledge of science or a specific subject and grade at GCSE 	<ul style="list-style-type: none"> ■ NVQ Level 2 ■ BTEC/UAL Level 2 (diploma) ■ Intermediate Apprenticeship ■ T Level Transition Programme 	<ul style="list-style-type: none"> ■ Level 3 course ■ Advanced Apprenticeship ■ Full-time employment
3.	<ul style="list-style-type: none"> ■ At least four GCSEs grade 4 (C) including English and maths or be able to demonstrate the ability to achieve grade 9-4 (A*-C) ■ Some courses require completion of a relevant Level 2 qualification ■ In some cases, specific subjects and grades at GCSE will be required 	<ul style="list-style-type: none"> ■ NVQ/BTEC Subsidiary Diploma/UAL Diploma ■ BTEC/UAL Extended Diploma ■ AS Levels ■ A Levels ■ T Levels ■ International Baccalaureate ■ Advanced Apprenticeship ■ Access to HE 	<ul style="list-style-type: none"> ■ Level 3 (year 2) ■ Level 4 or 5 ■ Foundation/ Bachelor Degree ■ Higher Apprenticeship ■ Full-time employment
4.	<ul style="list-style-type: none"> ■ First year Foundation Degree course ■ Higher National Certificate (HNC) ■ NVQ Level 4 ■ BTEC Higher National Certificate 	<ul style="list-style-type: none"> ■ Higher Apprenticeship or start of Degree Apprenticeship course ■ First year Honours Degree course ■ Certificate of Higher Education 	
5.	<ul style="list-style-type: none"> ■ NVQ Level 5 ■ Diploma of Higher Education ■ Higher National Diploma (HND) ■ BTEC Higher National Diploma 	<ul style="list-style-type: none"> ■ Higher Apprenticeship or intermediate level of Degree Apprenticeship course ■ Second year Honours Degree course ■ Foundation Degree 	

Please note that the entry requirements listed here are a general guide only. They will vary depending on the school or college. Always check with an individual institution for information on what is required to enrol on a specific course.

Full-time courses and qualifications

If your young person chooses one of the following qualification types, they will usually be in education between three to five days a week.

The alternative is an apprenticeship - see page 7.

National Vocational Qualifications (NVQs) and Business and Technology Education Council (BTEC) diplomas

Offered
at our
colleges

NVQs and BTEC qualifications are examples of professional, technical or work-based qualifications that teach students the skills and knowledge they need for a chosen occupation.

Awarding bodies include City & Guilds (C&G), the Northern Council for Further Education (NCFE) and the Vocational Training and Charitable Trust (VTCT).

Level 1, 2 and 3 options may be available, as well as opportunities to progress to university-level qualifications.

Assessment takes place throughout the course on both practical skills and theoretical knowledge.

Course subjects offered at our college

- Aircraft maintenance
- Barbering
- Beauty Therapy
- Bricklaying
- Business
- Cabin crew & Aviation Operations
- Carpentry & Joinery
- Catering & Hospitality
- Early Years & Childcare
- Construction
- Electrical Installation
- Engineering
- Estate Agency
- Hairdressing
- Health & Social Care
- Hair & Media Makeup
- Motorsport Vehicle
- Maintenance
- Painting & Decorating
- Plumbing
- Travel, Tourism
- Conference & Events
- Sport
- Uniformed Services

Entry requirements

These are provided as an indication only. Please check individual course listings on our website for specific requirements: gbmc.ac.uk

Level 1

A minimum of two GCSEs grade 9-2 (A*-F) or achievement of an Entry Level qualification (to include English and maths, or be able to demonstrate the ability to work at the appropriate level).

Appropriate level of aptitude and skills may be assessed as part of the application review.

Level 2

A minimum of three GCSEs grade 9-3 (A*-D/E) to include, or be able to demonstrate the ability to achieve, GCSE English and maths or Functional Skills at Level 1/ Level 2.

Some courses require specific subjects and grades at GCSE.

Level 3

A minimum of four GCSEs grade 4 (C) or above including English and maths, or to be able to demonstrate the ability to achieve grade 9-4 (A*-C).

In some cases specific subjects and grades at GCSE will be required. Some courses require completion of a relevant Level 2.

Offered
at our
colleges

University of the Arts London (UAL)

UAL/BTEC diplomas are an alternative to A-Levels.

They are practical courses that relate to a particular profession, area of work or technical skills.

Many higher education providers will offer places on university-level courses to students with Level 3 qualifications. Check with individual establishments for specific entry requirements.



Course subjects offered at our college:

- | | | |
|------------------------------------|--|---|
| ■ Acting | ■ Digital Marketing | ■ Music & Media |
| ■ Art & Design | ■ Fashion & Textiles | ■ Music Performance |
| ■ Computing & Digital Technologies | ■ Fashion Design and Business | ■ Music Production |
| ■ Creative Enterprise | ■ Film & Broadcast | ■ Music Technology |
| ■ Creative Media | ■ Games Development | ■ Musical Theatre |
| ■ Dance | ■ Games, Animation, Special Effects and e-Sports | ■ Photography |
| ■ Design for Theatre, TV & Film | ■ Graphic Design & Illustration | ■ Theatre Technology & Event Production |
| | | ■ Visual Merchandising |

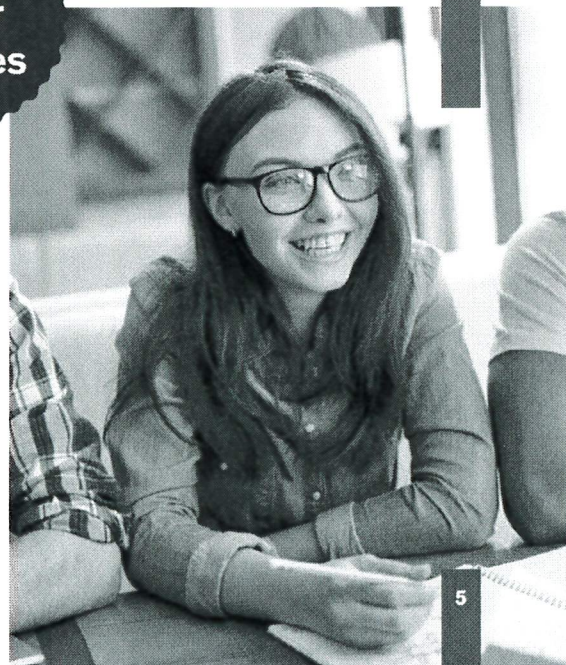
ual: awarding
body

Supported Internships and Foundation Gateway Learning

We have a range of courses to help those students who may need some additional support with their learning. These courses will help to develop study skills and build confidence.

Our Special Educational Needs and Disability (SEND) courses cater for 16-25 year olds with mild/ moderate learning difficulties, behavioural or social needs. These courses are also suitable for people with emotional health concerns. Students gain skills and confidence through activities such as external day trips, community volunteering and work experience. Courses include literacy, numeracy and IT, as well as jobs search and employability skills.

Offered
at our
colleges



Offered
at our
colleges

T Levels

T Levels are technical qualifications, equivalent to three A-Levels. They involve a combination of classroom-based learning and industry placements to provide you with a clear route into skilled employment, Higher Education (university) or degree-level apprenticeships.

Entry requirements

At least five GCSEs at grade 4 or above, including English and maths.

Why consider a T Level?

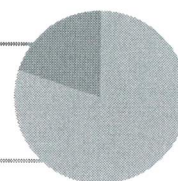
- Develop the practical skills needed for your chosen career
- Experience what the job involves
- Gain the knowledge required for your chosen sector
- Achieve a technical qualification
- Build a relationship with a potential employer
- Have the option to progress to higher level study

How are T Levels taught?

- Two years to complete
- 80% in the classroom, 20% on industry placement
- 45–60 day industry placement
- Assessed through exams, coursework, workplace observations, an employer project and an end-point assessment

20%
academic

80%
practical



A Levels

Short for Advanced Level, A-Levels usually focus on subjects such as history, maths, English, psychology, foreign languages and science. Some creative subjects are also available including art and dance.

Applicants generally need at least five GCSE passes (grade 9-4) including English to study A-Level subjects at a sixth form school/college, but this varies. Some colleges may also ask for a particular grade in a relevant GCSE subject. For example, a grade 5 or above in science and maths in order to study chemistry A-Level.

Traditionally students have studied three or more A-Levels in order to qualify for degree-level courses at college or university. However, the number of young people choosing to study a combination of A-Levels and vocational courses such as BTECs is growing. Entry requirements vary by provider and by course, so it is worth checking with them if your young person has a particular path in mind.



Apprenticeships

Offered
at our
colleges

If your young person chooses to start an apprenticeship, they'll be working and earning straight after leaving school.

Apprentices need to be in active employment with training taking place either 'on or off the job' and one-to-one visits from a college assessor provided.

20% of an apprentice's time is allocated to off-the-job training allowing time to complete assignments and modules. An apprenticeship may be work-based with training set aside each week in the work environment or an apprenticeship can be 'day-release', with apprentices attending college once a week to meet the 20% requirement.

30 hours

Apprentices are required to have a minimum of 30 hours in the workplace each week.

1-4 years to complete

An apprenticeship can take between one and four years to complete depending on the level, the apprentice's ability and the industry sector. As a guide, an Intermediate Level 2 Apprenticeship usually takes around 12 to 18 months and an Advanced Level 3 Apprenticeship around 18 to 24 months.

£4.81 per hour

The minimum wage for an apprentice is currently £4.81 per hour. This rate applies to those under 19 and those aged 19 or over who are in their first year of an apprenticeship. Apprentices aged 19 or over, and those who have completed their first year, must be paid at least the minimum wage for their age.

An apprenticeship is a valued and recognised qualification for many industries and there are lots of employment sectors to choose from:

- Accounting
- Business Administrator
- Customer Service
- Electrician
- Carpentry
- Bricklaying
- Digital Marketing
- ICT
- Digital Support Technician
- Hairdressing
- Health and Social Care
- Human Resources
- Teaching Assistant
- Vehicle Maintenance and Repair

How to apply for an apprenticeship

All available apprenticeships in England are listed on GOV.UK.

The apprenticeship team can be contacted on:
01903 273 732 | apprenticeships@gbmc.ac.uk



There are three different levels of apprenticeship:

1. Intermediate Level 2

- Equivalent to five GCSE passes
- Intermediate level
- Learn basic skills and knowledge for chosen career

2. Advanced Apprenticeships Level 3

- Equivalent to two A-Level passes
- Focus on developing specialised industry specific skills and knowledge

3. Higher Apprenticeships Level 4, 5 and 6

- Ideal for those already working in a senior role
- Further develop professional skills and knowledge
- Viable alternative to a foundation degree at university-level