



Honesty

Faith

Courage

Uniform and Stationery Catalogue 2017/2018

Opening Hours:
Monday to Friday during school lunchtime
term time only



Catalogue valid: 28.06.17 – 01.06.18

King's Academy Ringmer College Shop

Tel: 01273 812220

Fax: 01273 812603



Opening Hours: During term-time Monday to Friday – lunchtimes only

Also at: New Intake Parents Evening Thursday 29 June 2017 4.00pm – 7.00pm

Summer opening times:

Tuesday 11th July 10.00am to 2.00pm

Monday 17th July 10.00am to 2.00pm

Wednesday 19th July 10.00am to 2.00pm

Other dates will be published on the college website.

The shop will then be open **every lunchtime** when the Students start back in September 2017

NB: *The shop will be closed on College Inset Day 4th September 2017 (or any other days the students are not required to attend the College)*

School Uniform by Mail Order:

Return the order form on Page 5 of this catalogue, clearly stating catalogue number, size and nature of the garments you wish to purchase with payment. If items are in stock they will be ready for collection from the College reception desk within 48 hours. College reception is open until 4.30pm Monday to Thursday and until 4.00pm on Friday. If the goods are not in stock we telephone you or send a message via your child as soon as the goods have arrived from the supplier.

To exchange garments that prove to be the wrong size, or to obtain a refund, garments should be returned to the shop **with the receipt of purchase**. Items that have been worn or washed cannot be exchanged.

Payment:

Payment should be by credit or debit card, cash or cheque (payable to "RINGMER COLLEGE SHOP"). All cheques must be supported by a cheque guarantee card number. Payment must be with order. Please put name of student and mentor group on the reverse of the cheque.

Reminder:

If you are sending your child into school with large sums of money to buy items of clothing, please insist that the money is left with the College finance office to be kept in the safe at the beginning of the day and collected at lunchtime to take to the shop.

Prices:

Prices are correct at the time of going to print but may vary at any time thereafter, depending on changes in manufacturer's prices.

VAT:

Items in the catalogue that include VAT within the price shown are marked with an asterisk (*).

Lost Clothing:

All lost clothing clearly marked with the child's name and found upon the premises will be returned to the child within 24 hours of being found. PLEASE purchase name labelling pens and clearly mark your child's name in their clothing.

All lost clothing not marked will be handed to the College reception desk and can be reclaimed from there, with appropriate evidence of ownership. Property not claimed will be displayed monthly at a College lost property display in Reception at lunchtime. Property not claimed after display will be resold as recycled clothing in the College Shop where appropriate.

Recycled Clothing:

The College Shop will sell good quality second-hand clothing when it is given to the College for resale. If your child has grown out of an item of clothing that still has plenty of wear left in it, do send it in to the College Shop for resale. All proceeds of such sales will go to School Fund and will be used to enhance the educational facilities of the College.

Can You Help?

Our shop is staffed by parent volunteers and students. We always need parents to help in the shop - if you can spare a lunchtime please call the Finance Office on 01273 812220 and we will be happy to give you more details.

Uniform Checklist

This is a list of the basic requirements for students at King's Academy Ringmer.

Please ensure all items are named.

College Uniform for boys and girls

Black blazer, with embroidered College Logo – separate badge will be sold to sew on to blazers not brought direct from College shop

Black trousers - formal trousers,(**no jeans, sweatpants, leggings; flares, drainpipes etc.**)

Black Drop Waist Box Pleated skirt – length should be 20".

White shirts with collar plus King's ties
Shirts are to be tucked in and ties worn at a sensible length

Black sweater or Cardigan (optional for colder days under blazer)

PE Wear for boys and girls

Rugby shirt – Black and House Colour

Black hockey/football socks

Polo shirt with King's logo – Black and House Colour

Black PE shorts/ Girls Black Skorts / Black tracksuit bottoms

Gum Shield

Shin Pads

Other requirements

Swimwear (black)

White T Shirt for Dance

Technology Apron

Life bottle drinking bottle (optional) - can refill at water stations around the college

The below items are not sold in the college shop but are part of the required college uniform

Tights for girls are to be black or flesh coloured or black or white socks

Plain black socks – boys

Plain black shoes. **NO trainers**

Black overcoat/raincoat if needed to wear to and from college (**NO other outerwear, such as hooded jumpers**)

PE and Dance GCSE students are able to purchase black tops and trousers – available from College Shop.

SHOP CREDIT CARD SALES PAYMENT REQUEST

NAME ON CARD	
STUDENT NAME/S	
MENTOR GROUP/S	
HOUSE NUMBER	
POSTCODE	

PAYMENT TYPE	CREDIT/DEBIT
CARD TYPE	
CARD NUMBER	
START DATE	
EXPIRY DATE	
SWITCH ISSUE No.	
SECURITY No.	(last 3 digits on back of card)
TOTAL TO DEBIT	£
SIGNATURE: _____ DATE: _____	

Please return this form and any relevant payment to the Finance Office at King's Academy Ringmer for your order and payment to be processed.

If you are paying by Credit/Debit Card all boxes above must be completed to enable payment to authorised by your card provider.

College Blazers with logo

Black blazer for boys and girls. The classic Premier Blazer style is made from Polyester twill fabric, fully machine washable. Back vents and inner zipped pockets. Embroidered with the college logo.

Boys Blazers

Ref	Chest Size	Price
001	28"	£ 26.00
002	30"	£ 26.00
003	32"	£ 26.00
004	34"	£ 26.00
005	36"	£ 26.00
006	38"	£ 30.00*
007	40"	£ 30.00*
008	42"	£ 30.00*
009	44"	£ 30.00*
010	46"	£ 30.00*
011	48"	£ 30.00*
012	50"	£ 30.00*
013	52"	£ 30.00*

Girls Blazers

Ref	Chest Size	Price
014	28"	£ 26.00
015	30"	£ 26.00
016	32"	£ 26.00
017	34"	£ 26.00
018	36"	£ 26.00
019	38"	£ 30.00*
020	40"	£ 30.00*
021	42"	£ 30.00*
022	44"	£ 30.00*
023	46"	£ 30.00*
024	48"	£ 30.00*
025	50"	£ 30.00*
026	52"	£ 30.00*

Blazer Badge – only required for Blazers not purchased from the College shop

043 BLAZER BADGE £ 5.50*



College Ties– Striped Navy with King's Logo

044 King's tie – Navy & Green Striped

£ 6.00*



Black V-neck jumper

Black v neck sweater. This is optional to be worn under the college blazer on colder days.

Ref	Chest Size	Price
049	28"	£ 12.70
050	30"	£ 13.50
051	32"	£ 13.50
052	34"	£ 13.70
053	36"	£ 14.70
054	38"	£ 17.50*
055	40"	£ 17.50*
056	42"	£ 19.50*
057	44"	£ 19.50*
058	46"	£ 20.50*
059	48"	£ 20.50*



White shirts

White shirt with collar – long sleeve for boys and girls

Boys Long Sleeve White Shirt

Ref	Collar Size	Price
060	13"	£ 6.70
061	13 ½"	£ 6.70
062	14"	£ 6.70
063	14 ½"	£ 8.50*
064	15"	£ 8.50*
065	15 ½"	£ 8.50*
066	16"	£ 8.50*
067	16 ½"	£ 8.50*
068	17	£ 8.50*
069	17 ½"	£ 8.50*

Girls Long Sleeve White Shirt

Ref	Chest Size	Price
070	26"	£ 6.70
071	28"	£ 6.70
072	30"	£ 6.70
073	32"	£ 6.70
074	34"	£ 6.70
075	36"	£ 8.50*
076	38"	£ 8.50*
077	40"	£ 8.50*
078	42"	£ 8.50*
079	44"	£ 8.50*

Short sleeve available by special request

Boys Trousers

Black Flat Front Slim Fit trousers – Straight leg trousers also available.

Ref	Waist	Inside Leg	Price
080	26"	28"R	£14.00
081	27"	29"R	£14.00
082	28"	30"R	£14.50
083	29"	30"R	£17.00*
084	30"	32"R	£17.00*
085	31"	32"R	£17.00*
086	32"	32"R	£17.00*
087	34"	32"R	£17.00*
088	36"	32"R	£17.00*
089	38"	32"R	£17.00*
090	40"	32"R	£17.00*
091	42"	32"R	£17.00*



Girls Trousers

Black Slim Fit trousers – Straight leg trousers also available.

Ref	Waist	Inside Leg	Price
092	22"	26"R	£14.00
093	23"	26"R	£14.00
094	24"	26"R	£14.00
095	25"	28"R	£14.00
096	26"	30"R	£14.00
097	27"	30"R	£14.00
098	28"	30"R	£14.00
099	29"	30"R	£16.00*
100	30"	30"R	£16.00*
101	31"	30"R	£16.00*
102	32"	30"R	£16.00*
103	34"	30"R	£16.00*
104	36"	30"R	£16.00*
105	38"	30"R	£16.00*



Girls and Boys trousers come in regular leg length as standard. Short, long and extra-long length trousers are also available as a special order.

Black Drop Waist Box Pleated skirt

Length 20" Concealed zip & internal button side fastening.

Ref	Waist	Price
	AGE 8/9	£11.85
106	22"	£13.50
107	24"	£13.50
108	26"	£13.50
109	28"	£13.50
110	30"	£15.20*
111	32"	£16.50*
112	34"	£16.50*
113	36"	£16.50*
114	38"	£16.50*



Boys PE Polo shirt in black and Band of House colour with College logo printed on left.

Arundel Green/Black Polo Shirt Unisex

Ref	Size	Price
115	11-12	£14.00
116	XS	£14.00
117	S	£14.00
118	M	£16.50*
119	L	£16.50*

Bodiam Purple/Black Polo Shirt Unisex

Ref	Size	Price
120	11-12	£14.00
121	XS	£14.00
122	S	£14.00
123	M	£16.50*
124	L	£16.50*



Lewes Yellow/Black Polo Shirt Unisex

Ref	Size	Price
125	11-12	£14.00
126	XS	£14.00
127	S	£14.00
128	M	£16.50*
129	L	£16.50*

Pevensey Blue/Black Polo Shirt Unisex

Ref	Size	Price
130	11-12	£14.00
131	XS	£14.00
132	S	£14.00
133	M	£16.50*
134	L	£16.50*

Ladies PE Polo shirt in black and Band of House colour with College logo printed on left.

Arundel Green/Black Polo Shirt Ladies Fit

Ref	Size	Price
135	11-12	£14.00
136	6	£14.00
137	8	£14.00
138	10	£16.50
139	12	£16.50*
140	14	£16.50*

Bodiam Purple/Black Polo Shirt Ladies Fit

Ref	Size	Price
141	11-12	£14.00
142	6	£14.00
143	8	£14.00
144	10	£16.50
145	12	£16.50*
146	14	£16.50*

Lewes Yellow/Black Polo Shirt Ladies Fit

Ref	Size	Price
147	11-12	£14.00
148	6	£14.00
149	8	£14.00
150	10	£16.50
151	12	£16.50*
152	14	£16.50*

Pevensey Blue/Black Polo Shirt Ladies Fit

Ref	Size	Price
153	11-12	£14.00
154	6	£14.00
155	8	£14.00
156	10	£16.50
157	12	£16.50*
158	14	£16.50*



Rugby Shirts

Rugby\hockey shirt in black and Band of House colour

Arundel Green/Black Rugby Shirt Unisex

Ref	Size	Price
159	30"/32"	£13.00
160	34"/36"	£13.00
161	38"/40"	£16.50*
162	42"/44"	£16.50*
163	46"/48"	£16.50*

Bodiam Purple/Black Rugby Shirt Unisex

Ref	Size	Price
164	30"/32"	£13.00
165	34"/36"	£13.00
166	38"/40"	£16.50*
167	42"/44"	£16.50*
168	46"/48"	£16.50*

Lewes Yellow/Black Rugby Shirt Unisex

Ref	Size	Price
169	30"/32"	£13.00
170	34"/36"	£13.00
171	38"/40"	£16.50*
172	42"/44"	£16.50*
173	46"/48"	£16.50*

Pevensey Blue/Black Rugby Shirt Unisex

Ref	Size	Price
174	30"/32"	£13.00
175	34"/36"	£13.00
176	38"/40"	£16.50*
177	42"/44"	£16.50*
178	46"/48"	£16.50*

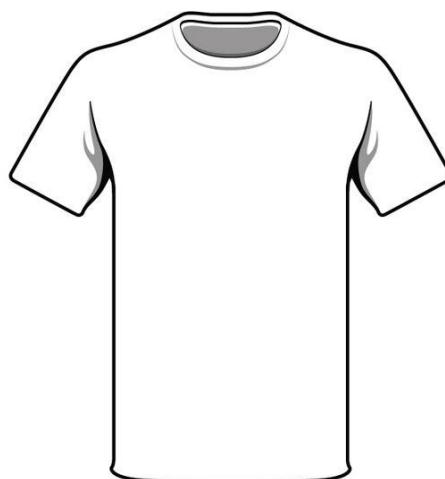


T-Shirts

White round neck T-shirt

100% cotton, by Blue Max for dance

Ref	Size	Price
179	11-13	£3.00
180	S	£3.50*
181	M	£3.50*
182	L	£3.50*
183	XL	£3.50*



Dance GCSE T-Shirts Unisex Black

Ref	Size	Price
184	S - 34"/36"	£15.00*
185	M - 38"/40"	£15.00*
186	L - 42"/44"	£15.00*
187	XL - 46"/48"	£15.00*



Dance GCSE T-Shirt Ladies Fit Black

Ref	Size	Price
188	S - 34"/36"	£15.00*
189	M - 38"/40"	£15.00*
190	L - 42"/44"	£15.00*
191	XL - 46"/48"	£15.00*

GCSE Black/White PE Polo's Unisex

Ref	Size	Price
192	Small	£20.00*
193	Medium	£20.00*
194	Large	£20.00*



GCSE Black/White PE Polo's Ladies Fit

Ref	Size	Price
195	Small	£20.00*
196	Medium	£20.00*
197	Large	£20.00*

Honeycomb polyester shorts. Black, longer leg.

Ref	Waist	Price
198	22/24"	£3.70
199	26/28"	£3.70
200	30/32"	£4.60*
201	34/36"	£4.60*
202	38/40"	£4.60*



Girls Skorts Black

Ref	Waist	Price
203	22/24"	£11.00
204	26/28"	£11.00
205	30/32"	£13.50*
206	34/36"	£13.50*
207	38/40"	£13.50*



Black Tracksuit Bottoms

Ref	Size	Price
208	24/26"	£11.50
209	26/28"	£11.50
210	28/30"	£11.50
211	30/32"	£15.00*
212	32/34"	£15.00*
213	34/36"	£15.00*
214	38/40"	£15.00*



Mistral Reverse Black Jacket embroidered with the college logo

This item is by special order only

Ref	Size	Price
215	9/10 Years	£26.00
216	11/12 Years	£26.00
217	13 Years	£26.00
218	Small	£33.20*
219	Medium	£33.20*
220	Large	£33.20*

Football\hockey socks

Black with white stripes and College name detailed

Ref	Shoe size	Price
221	12½ - 3½ (B)	£ 4.20
222	4 - 7	£ 4.90*
223	8 - 11	£ 4.90*
224	12 - 14	£ 4.90*



Girls black swimsuit by Speedo - 53% polyester, 43% PBT/PL with racing style back

Ref	Size	Price
225	28"	£11.50
226	30"	£11.50
227	32"	£11.50
228	34"	£13.50*
229	36"	£16.50*
230	38"	£16.50*
231	40"	£16.50*



Boys Swimming shorts by Speedo. Black, 100% polyester with elasticated waist and inner lining.

Ref	Size	Price
232	26" Med boys	£7.00
233	28" Large boys	£7.00
234	30" XL boys	£7.00
235	32" XS men's	£11.00*
236	34" M men's	£11.00*
237	35-37" L men's	£11.00*



Swim goggles

Ref		Price
238	Junior Goggles	£7.50*
239	Senior Goggles	£9.00*
240	Nose Clip	£3.75*



Shin Pads

Ref		Price
241	One Size	£5.00*



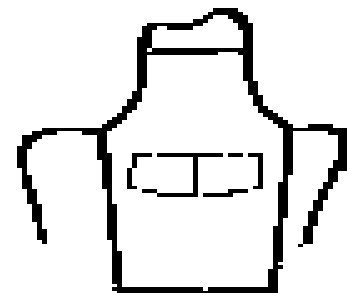
Gum shields

Ref		Price
242	Gum Shield – Junior	£1.60*
243	Gum Shield – Senior	£1.60*



Technology Apron – Unbleached 100% Cotton

Ref	Size	Price
244	One size	£4.00



Personalised Naming

Please ensure all clothing is named.

There are **three** options available for naming articles.

1. **Iron on Tapes** - pack of 72 tapes black on white.
Order forms are available from the shop.

Ref	Price
245	£4.95

2. **Sew on Tapes** - pack of 72 embroidered tapes (in red/
blue/black on white)
Order forms are available from the shop.

Ref	Price
246	£4.95

3. **Indelible Marker Pen** - Plastic tip pen suitable for
permanently marking everything from clothing to sports equipment.

Ref	Price
247	£0.50*



Water Bottle 350ml

Ref	Price
248	£7.50*



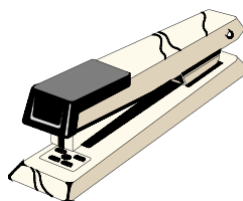
Stationery

<i>Ref</i>	<i>Description</i>	<i>Price</i>
PENS		
300	BIRO Black	£0.10*
301	BIRO Blue	£0.10*
302	BIRO Red	£0.10*
303	BIRO Green	£0.10*
304	BEROL Handwriting Black	£0.36*
305	BEROL Handwriting Blue	£0.36*
306	BEROL Finline Pen – Red for writing and detailed drawing	£0.55*
307	BEROL Finline Pen – Black for writing and detailed drawing	£0.55*
308	Berol Finline – Blue for writing and detailed drawing	£0.55*
309	Highlighter Pens	£0.70*
310	Highlighter pack of 4	£3.40*
311	RCC Pen	£0.05*
312	Gel Pen – various colours	£0.75*
314	Shimmers pens - pack of 4 fluorescent pens	£1.50*
315	Pen-Ink Remover/Corrector	£0.65*
PENCILS		
316	2B pencil	£0.20*
317	4B pencil	£0.20*
318	HB pencil	£0.20*
319	H pencil	£0.20*
320	Propelling pencil	£0.45*
RULERS		
321	30cm - white plastic	£0.25*
322	30cm - clear plastic	£0.30*
323	15cm - clear plastic	£0.20*



General Stationery

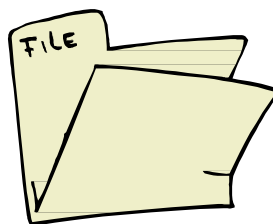
<i>Ref</i>	<i>Description</i>	<i>Price</i>
324	Correction Pocket Mouse	£2.50*
326	Pritt Stick - 10g	£1.10*
327	4 Colour Retractable Pens	£0.80*
328	Clear Self-adhesive tape	£0.50
330	Repositionable notes	£1.00*
331	Treasury Tags - pack of 20	£0.80*
332	Paper Clips, coloured	£0.80*
333	Hole Puncher - 2 hole punch	£1.15*
334	Re-enforcing Rings - dispenser of 250	£0.60*
335	Stapler	£1.65*
336	Staples for above	£0.60*
337	Staple Remover	£0.65*
338	Pencil Sharpener	£0.50*
339	Scissors	£0.90*
340	Erasers	£0.10*



Folders and Storage

341	10 Pocket See & Store Book	£2.75*
342	20 Pocket See & Store Book	£2.85*
343	Electra Display Folder A4 – 24 page	£2.75*
344	A3 Display Folder- Various colours portfolio with clear pages for displaying work	£6.75*
345	Lever Arch File	£1.50*

Ref	Description	Price
346	Curriculum Binder - various subjects available	£1.25*
347	2 Ring Binder - various colours	£1.00*
348	Reinforced Plastic Pocket	£0.05*
349	Subject Dividers - Pack of 5	£0.45*
350	Subject Dividers - Pack of 10	£0.50*
351	PC File - keeps documents and disc in one place	£0.80*
352	Report File keeps papers together and neat	£0.30*
353	Polyfolio - lightweight zipped wallet Red, Blue, Green, Yellow	£0.40*
354	Book Cover Film - 1m clear roll	£0.90*
355	Assorted Sticky labels	£0.50*



Pencil Cases

356	Walkers Crisps pencil case	£1.00*
357	Helix Pencil Case	£1.00*
358	Exam Pencil Case with zip, clear plastic case	£1.00*
329	Starter Kit (Clear Pencil Case with Black, Blue, Red & Green Biro, 2 HB Pencils + maths Set)	£2.75*



Exercise Books, Paper & Files

359	Maths Exercise book - 5mm squared	£0.40*
360	Exercise Book, lined with margin 8" x 6½"	£0.30*
361	Homework Diary	£1.00*
362	A4 Notepad	£1.45*
363	Reporters Notebook	£0.50*
364	Spiral Notebook	£0.40*
365	Notebook 6½" x 4"	£0.15*
366	Music Manuscript book, 32 pages, 6 staves per page	£0.50*



Maths

<i>Ref</i>	<i>Description</i>	<i>Price</i>
367	Compass	£0.40*
368	Set Square	£0.15*
369	Protractor	£0.15*
370	Circular Protractor	£0.60*
371	Maths set - 8 piece, includes compass, protractor, set square	£1.30*
372	LOGIK LK - 185 Dual power battery + solar power with hard case. Fraction calculations, algebraic logic.	£6.15*



Technology

<i>Ref</i>	<i>Description</i>	<i>Price</i>
373	EDDING – 55 fineliner pen 0.3mm	£0.80*
374	EDDING – 1880 Drawliner Pack of 4 0.1, 0.3, 0.5 + 0.7mm	£5.20*
375	Set Square 45° 210mm	£0.55*
376	Set Square 60° 210mm	£0.55*

Art Materials

Coloured Pens & Pencils

<i>Ref</i>	<i>Description</i>	<i>Price</i>
377	Coloured Pencils - wallet of 10 BEROL Verithin Fine Drawing Pencils	£2.20*
378	Lakeland coloured pencils – pack of 12	£3.05*
379	Blendable Coloured pencils (can be used for watercolour)	£2.20*
380	BEROL – Colour Fine Pens – 12 assorted fine fibre tip pens	£3.60*
381	BEROL Colour Broad 1.7mm Pens – 12 assorted fibre tip pens	£3.60*
382	BEROL Thick Graphite Pencil	£0.50*



Paints and Pastels

<i>Ref</i>	<i>Description</i>	<i>Price</i>
383	Sketching set 12 compressed charcoal sticks in various shades of grey	£3.20*
384	Water colour box – 12 tablets of colour	£3.25*
385	Oil pastels - pack of 25 mixed colours	£3.10*
386	Willow Charcoal – medium, pack of 25 sticks	£2.30*



Sketch Books

Hardback Sketch Book - cloth cover 48 leaves, 130 gsm, cartridge paper

Ref	Description	Price
387	A5 landscape	£2.50*
388	A4 Portrait	£4.70*
389	A3 Portrait	£10.20*
390	A3 Landscape	£10.50*



Spiral Bound Sketch Pads - 30 sheets, 130 gsm, cartridge paper

Ref	Description	Price
391	A4 size Portrait	£2.90*
392	A3 size Portrait	£4.30*
393	Budget Sketch Book A4 size, 20 leaves, 130 gsm, cartridge paper	£1.00*
394	Drawing Cartridge A4 size 140gsm	£1.75*

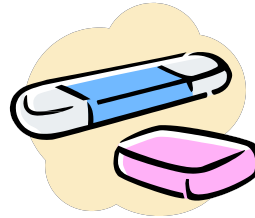
Watercolour Brushes

Ref	Description	Price
395	Size 2	£0.45*
396	Size 4	£0.45*
397	Size 6	£0.50*
398	Size 8	£0.65*
399	Wallet of 4 brushes (size 2, 4, 6 & 8)	£2.50*



General Art Items

<i>Ref</i>	<i>Description</i>	<i>Price</i>
400	A1 Mount Board White	£2.20*
401	A1 Mount Board Black	£2.20*
402	Crayola crayons - pack of 24 assorted	£1.00*
403	Rowneys Kneadable Artist Rubber	£1.05*
404	Raso Rubber	£0.40*

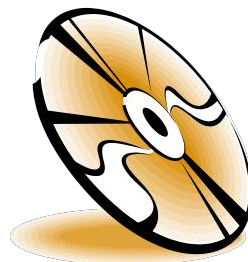


Polythene Holdalls - robust 1000 gauge polythene (improved design)

<i>Ref</i>	<i>Description</i>	<i>Price</i>
405	SRA1 size	£5.50*
406	SRA3 size	£1.70*
407	A1 Storage bag - open along one side	£1.10*
408	A2 Display Folder	£8.00*

Miscellaneous Items

<i>Ref</i>	<i>Description</i>	<i>Price</i>
409	1st Class Stamp	£0.62*
410	2nd Class Stamp	£0.53*
411	Batteries - 1.5v R65/AA – each	£0.40*
412	Wrapping Paper - 2 metre roll - various designs	£0.75*
414	Greeting Cards	£0.50*
415	CD - Blank CD-R	£1.00*
416	Lanyards	£1.00*
417	Exam Pack	£3.00*
430	Book Cover - keeps books in pristine condition fits English Anthology Book	£0.40*



Reeds

<i>Ref</i>	<i>Description</i>	<i>Price</i>
480	Alto Saxophone Reed	£2.40*
481	Clarinet Reed	£2.05*
483	Guitar Pick	£0.45*



Dictionaries - For everyday use:

<i>Ref</i>	<i>Description</i>	<i>Price</i>
500	English - The Collins Gem Dictionary	£4.00
501	French - The Collins Gem Dictionary ISBN 0-00-458539-9	£4.00
502	The New Oxford Dictionary ISBN 0199102341	£4.80
503	Vocabulary for GCSE French Mary Glasgow Pubs. ISBN 1852341882	£4.50

Verb Tables

<i>Ref</i>	<i>Description</i>	<i>Price</i>
505	French – Collins Gem ISBN – 0-00-470993-4	£4.50

Textbooks


Students and parents may purchase key textbooks in use in the College to enable students to have their own copy of a textbook at home.

Your own textbook can become a personalised working document with pencil notes in the margin etc. College textbooks must be returned in good order.

NB: Students will continue to be provided with essential textbooks by the College. If you would like to order a textbook not listed below please see Mrs Duckworth.

PLEASE NOTE: PRICES MAY VARY FROM THOSE PRINTED

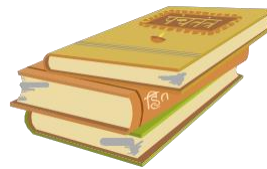
English

<i>Ref</i>	<i>Description</i>		<i>Price</i>
507	I'm King of the Castle		£6.00
508	View from the Bridge - Arthur Miller		£7.00
509	Twelfth Night		£5.00
510	Othello		£5.50

Revision Guides

<i>Ref</i>	<i>Description</i>	<i>Price</i>
520	KS4 Revision Guide - Citizenship	£3.00
521	GCSE Revision Guides – Graphic Products	£4.00
522	GCSE Revision Guides– Product Design	£4.00
523	GCSE Revision Guides– Textiles	£4.75

Ref	Description	Price
526	KS3 Maths	£2.00
527	Maths Foundation	£2.00
528	MFL Homework Workbook	£3.25
529	French Revision GCSE Bitesize	£4.00
530	OCR Double Science Award	£2.50
537	GCSE Revision Guide - Resistant Materials	£3.00
538	GCSE Practise Workbook - Resistant Materials	£3.00
539	GCSE Practise Answer Book - Resistant Materials	£2.50
541	GCSE Revision Guide – Geography	£3.50
542	GCSE Exam Practise Workbook – Geography	£3.00
544	Geography AS-Level Complete Revision & Practice	£5.00
548	GCSE Revision Guide – French with CD	£7.50
549	GCSE Revision Guide – Spanish with CD	£7.50
552	AQA Revision Guide – English – Foundation	£4.50
553	AQA Revision Guide – English – Higher	£4.50
556	EDEXCEL Revision Guide and Workbook Maths – Higher	£4.50
558	EDEXCEL Revision Guide and Workbook Maths – Foundation	£4.50



559	French Cashier d'exercices - Higher	£4.00
560	French Cashier d'exercices - Foundation	£4.00
562	French Revision Workbook	£2.70
563	Spanish Cuaderno Rojo - Higher	£4.00
564	Spanish Cuaderno Verdo - Foundation	£4.00
565	GCSE Spanish Revision Workbook	£2.70
566	OCR 21 ST Century GCSE Science- Foundation or Higher	£4.20
567	KS3 Science Revision Guide Levels 3-6	£2.60
568	KS3 Science Revision Guide Levels 5-7	£2.60
569	AQA Science Revision Guides Foundation	£2.50
570	AQA Science Revision Guides Higher	£2.50
571	GCSE Business Studies Revision Books	£3.00

Performance and Production DVDs

Are available to purchase on request.

Please contact the Finance Office for more details.



