

• *Kind* • *Ambitious* • *Resilient*



*in pursuit of
excellence*



Secondary Phase Open Evening 2022

King's Academy Ringmer
Lewes Road, Ringmer, East Sussex BN8 5RB
01273 812220

King's Academy Ringmer





WELCOME TO KING'S ACADEMY RINGMER - PRINCIPAL'S WELCOME

I am delighted to welcome you to King's Academy Ringmer. At the heart of our academy's success is our belief that every individual is capable of exceeding their potential and achieving more than even they imagined possible. We strive to produce not only the very best academic results, but to develop our students into adults who are Kind, Ambitious and Resilient. King's Academy Ringmer is immensely proud of our Ofsted rating of a 'good school'. They say:

'Students are confident learners. They are provided with many opportunities to take on positions of responsibility. Students behave well and the school is a calm and orderly environment for learning. Teachers have high expectations of what students can achieve and students continue to make strong progress.'

Our academic results continue to improve year on year. This year's results were the best ever once again with 78% of our students achieving a grade 4 or above in English, 77% in Maths and 88% in Spanish. The average GCSE grade our students leave with was a 5 and in terms of progress we add on average at least three quarters of a grade to each student's GCSE. These results mean that we are now categorised as an 'above average' school. We aim to cultivate bright, happy and confident young people, with good interpersonal skills.

We are confident the school has a warm and happy atmosphere and a sense of purpose, when students are at work. Our outstanding personal development and welfare means that students feel safe and they are supported well in the school. Students understand the risks of the modern world. We have well developed systems of pastoral care and a team of dedicated professionals, who look after our students' wellbeing. The expectations we have of our students extend beyond academia to uniform and discipline.

As Parents/Carers get to know us better, they value:

- The openness of staff and ease of access to our Pastoral team, tutors and staff when concerns arise.
- Our systems of communications, progress reports and Student Progress Evenings through which the partnership with parents is developed.
- The opportunities for sport, music, art, drama and dance, through extra-curricular activities after school in the evenings and even in the school holidays.
- The broad range of trips and visit opportunities throughout the year.
- The opportunities to be involved in your child's education.

As an Academy, we are directly accountable to our students and parent/carers. In return we are committed to giving everyone the best possible education and opportunities. If you are looking for your child's secondary school from further afield, there will be places for applicants from outside our normal catchment area. Do ask about the transport systems that make travel from a wide area straight forward. With all this and more, we can promise our students excellent opportunities for success. I am confident you will enjoy meeting our staff and students and that you will be impressed by what you see and hear. Please do not hesitate to ask me and my staff any questions that you have.

Yours sincerely
Mrs S Williams
Principal



PHYSICAL EDUCATION - GYM

PE at KAR has a very proud tradition in providing enjoyable and purposeful lessons for all students no matter what ability, in a range of different sports. We are currently offering GCSE PE, BTEC PE and Cambridge National in sports studies as part of our curriculum. We compete in a number of local partnership competitions in a number of sports and organise the local sports partnership Cross Country event held in Eastbourne each year as well as a number of inter and intra school events.

Last academic year we were extremely competitive with a number of our teams in a range of sports but in particular Netball and Football. Currently, we have some ex-pupils presenting on sports programmes, playing in the premier league, playing age grade internationally and a number of current students aspiring to compete professionally in the future.



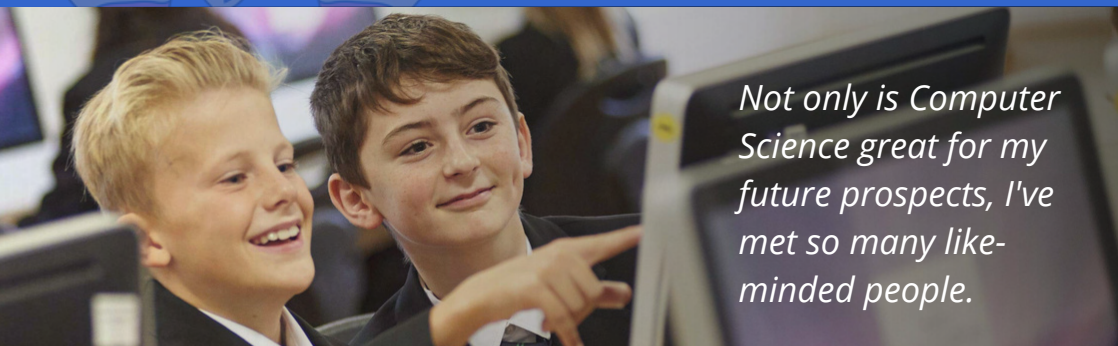
The facilities here at Ringmer are fantastic. Mr Coulthard has inspired me to go into coaching when I'm older.



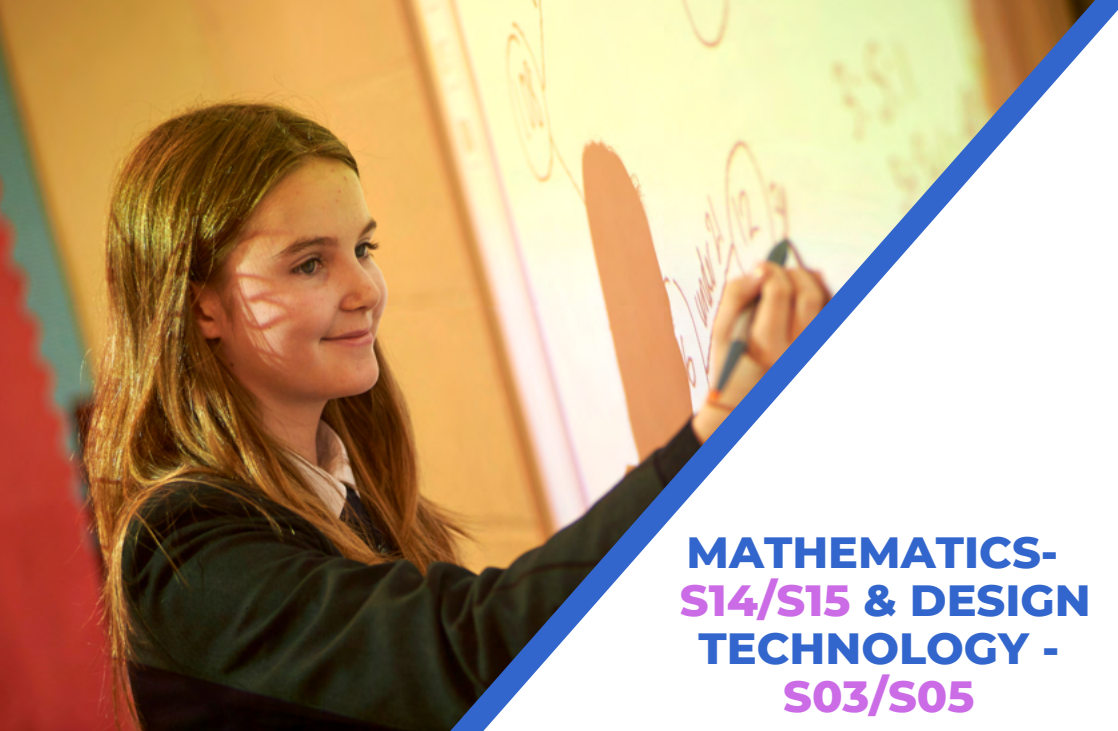
ART - S18/S16 & COMPUTER SCIENCE - S01

King's Academy Ringmer has an excellent reputation for enabling students to produce innovative, diverse, exciting and imaginative art work, whilst being able to enjoy the whole creative experience. The art department is a safe place where the students are able to experiment, explore, take risks, create and enjoy. It is an area of the school that is buzzing in both art and photography lessons, lunchtime and after school clubs.

Computer Science is about how computers operate, how they are programmed and how they communicate to share data. On the Computer Science course you will learn: how to use computers confidently and securely, aspects of computational thinking such as problem solving, algorithms, binary representation, abstraction and decomposition use various programming environments to create a programs to solve particular problems and to develop your programming skills, use computers to store, search, combine and manipulate data, have the opportunity to create your own computer games, gain an understanding of how networks operate and are secured, have the opportunity to create different media, such as animation, sound and movie clips and discuss future technologies and how they will change our lives.



Not only is Computer Science great for my future prospects, I've met so many like-minded people.



MATHEMATICS- S14/S15 & DESIGN TECHNOLOGY - S03/S05

We look forward to meeting you in room S14, one of four dedicated maths rooms, where we discuss, teach and enjoy mathematics. The department is proud of our students and their dedication to our subject, where mistakes are seen as the first steps to learning and without them nothing new is learnt.

The Design and Technology department at King's offers students the chance to design and make a range of exciting projects at Key Stage 3. Projects include designing and making a wooden clock, learning to draw in 3D, sustainable design, creative lighting, solar panel light, mechanical wooden toy, Alessi style egg cup and a concrete cast tealight. At Key Stage 4 students will study the new 9-1 GCSE Design and Technology course. They can specialise in different areas which include wood, metals, polymers, papers & boards and textiles. At GCSE level they learn about modern production techniques in design and make a product of their choice based on a context provided by AQA. We are well equipped department who can provide students with an exciting and well rounded course. Come and meet us to find out more.



*Technology at King's
Academy Ringmer
allows me to express
myself and gives me
new skills.*



DANCE, DRAMA & MUSIC - STEVE GREEN

Dance, Drama and Music at King's Academy Ringmer are highly valued and are taught to all students in Years 7 to 9 within Performing Arts and are offered as GCSE subjects for Years 10 and 11. There are a variety of extra-curricular clubs throughout KS3 and KS4 run on a weekly basis, across all disciplines. Students also have the opportunity to be involved in wide range of performances throughout the year. Previous performances include: the carol concert, whole school productions, rock and pop gigs and dance shows.

Please visit the Steve Green Building if you have any further questions and to see our performances throughout the evening!



I've learnt how to play the piano in my lessons. The school band has given me lots of friends and a new hobby at home.



SCIENCE - F07

Science is taught in mixed ability groups throughout Year 7, 8 and 9. Students in KS3 receive 9, 50 minute science lessons every fortnight. All students experience the three sciences through a rich variety of practical work. The emphasis is on learning how to use specialist equipment accurately and safely, as well as discovering the wonders of nature. The KS3 course has been carefully designed to develop the knowledge, understanding and skills that are required for KS4.

This will ensure good progression to KS4. Key Stage 4 Science is taught to both combined science groups (mixed ability, 12 lessons per fortnight, worth 2 GCSEs) and a triple science group (worth 3 GCSEs, 15 lessons per fortnight). GCSE Science is taught from mid-way through Year 9.

Throughout Years 7 to 11, students are assessed regularly on their knowledge and understanding of key scientific ideas. Students undertake carefully planned practical investigations to understand the scientific process and see the theories being taught for themselves, in a hands-on way.



My science lessons are so engaging, especially the experiments. I used to struggle at science but now it is my favourite subject.

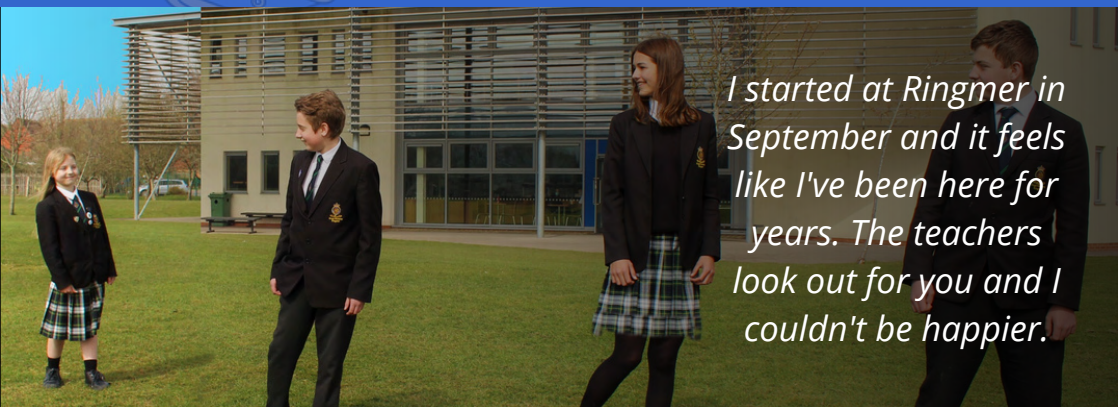


RELIGIOUS EDUCATION - G02 & PSHE

Who am I? Why am I here? Where am I going? No, you're not lost, you don't need confused.com - you're just ready for Religious Education!

We consider the fundamental human questions about life and belief. As part of this we take a critical look at what people from different viewpoints (Christianity, Buddhism, Hinduism, Islam and Judaism) think to give us some ideas. At first, we will get you to work out what you believe about the world and how it works. How does what you believe affect what you do? Our philosophy-focused RE course is all about how people like you all over the world make decisions and try to live a good life.

Our aim is for every student, whatever their background or their circumstances, to have the support they need to be healthy, stay safe, enjoy and achieve, make a positive contribution and achieve economic well-being.



I started at Ringmer in September and it feels like I've been here for years. The teachers look out for you and I couldn't be happier.

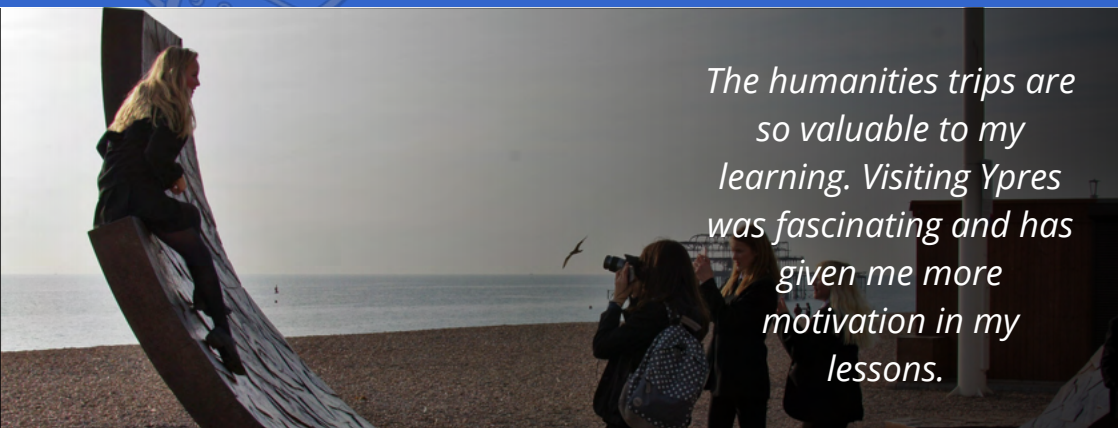


HISTORY - G05 & GEOGRAPHY G04

Explosive volcanoes, ground-shattering earthquakes and wild weather! Here in the Geography department we bring the wonders of our Earth to life. We believe the Earth is incredible and we aim to open the eyes of all our students to the astounding forces and processes behind our changing landscapes.

Come down to G04 and be inspired by amazing places, events and landforms.

'History? It's just one thing after another...' Or is it? Why did so many people get such horrible diseases? Why didn't Queen Elizabeth get married? Why did people allow themselves to be burnt to death for their beliefs? Why is East Sussex called '1066 county'? If you want to know the answers to questions like these then come on down to G05.



The humanities trips are so valuable to my learning. Visiting Ypres was fascinating and has given me more motivation in my lessons.



MODERN FOREIGN LANGUAGES - F03/F04

At King's Academy Ringmer, we want our students to develop a love of languages by celebrating and welcoming differences in our world. We want to inspire a love of languages as part of students' lifelong journey of learning. With the ever changing economic situation, we will open the students' eyes on how learning French or Spanish will be even more important to British companies looking to recruit candidates with language skills, thereby improving their career prospects and future income potential.

Students will develop listening, speaking, reading and writing skills. Learning a language will help to stimulate and encourage children's curiosity, confidence, social skills and self awareness. At key stage 3, students will learn the foundations of grammar, phonics and most frequently used vocabulary, as well as developing cultural awareness of the countries that speak the respective language.

At key stage 4, students will build on the foundations from prior years of language learning and apply more complex structures to their work. We intend to offer opportunities to go on school trips and link with nearby schools to celebrate the cultural and linguistic elements of the language.



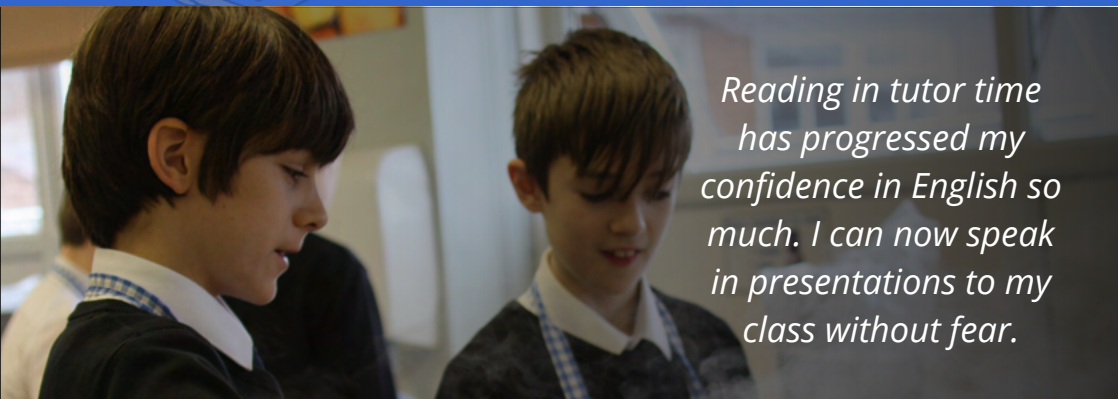
*Studying a language at
King's Academy
Ringmer gives me the
opportunity to succeed
on a global stage.*



ENGLISH - **W04** & **FOOD** **TECHNOLOGY -** **F08**

In English, we offer a rigorous curriculum that enables students to develop a love of speaking, reading and writing. Our focus on a range of classic and quality contemporary texts throughout both Key Stages provides students with a rich cultural capital that will prepare them not only for life outside school, but also for studying English Language and Literature at an advanced level. Come to W04 and learn about the range of extracurricular activities that engage students beyond the classroom, take part in a Spelling Competition and help us write a Group Poem!

In room F08 you are welcome to come and sample some of the students' practical work and talk to us about the opportunities available to all students to learn about healthy cooking and nutrition. There will be displays of student work from all year groups and pupils on hand to talk to visitors about our lessons. We love hearing about how our students are able to transfer their cooking skills into their home and cook for their families!



*Reading in tutor time
has progressed my
confidence in English so
much. I can now speak
in presentations to my
class without fear.*



PERSONAL DEVELOPMENT CURRICULUM & PASTORAL CARE

Alongside our enriching academic offer, we promote and value a Personal Development Curriculum that supports each individual student's growth as a young person. Every student is encouraged to attend our range of extra-curricular clubs and activities, to be ambassadors for the school, to enjoy local, national and international trips and to take part in celebrations of music and the creative arts. We are once again a 'Duke of Edinburgh' school, and our enrichment week in July provides unique and exciting experiences for all young people to build resilience, have fun and create lifelong happy memories.

Our House system promotes healthy competition and ambition for success, whilst encouraging young people to develop their leadership potential. It provides our students with a sense of community, where their achievement points accumulate not just individually, but as a House. Our Houses are named after famous academic pioneers, all who have left their mark on the world in a positive way. This is the message we want to give to our students, that King's Academy Ringmer will set them up to follow in the footsteps of their House Name... do you recognise any of the house names below?

SEACOLE - FRANKLIN - TURING - HAWKING

Tutor groups are arranged in year groups. This allows tutors to focus on relevant interventions and support students for their GCSE revision for Key Stage 4, whilst KS3 follows a reading scheme twice a week to help improve the standard of literacy and language. Students meet with their tutor each day where they will have either a focused tutor session for 25 minutes or an assembly. The Academy has two Pastoral Intervention Leaders and a Head of year 7 who are available for parents/carers to discuss any concerns and support students with non-academic issues. It also has Key Stage Progress Leaders who are responsible for ensuring the academic progress of students within each Key Stage.



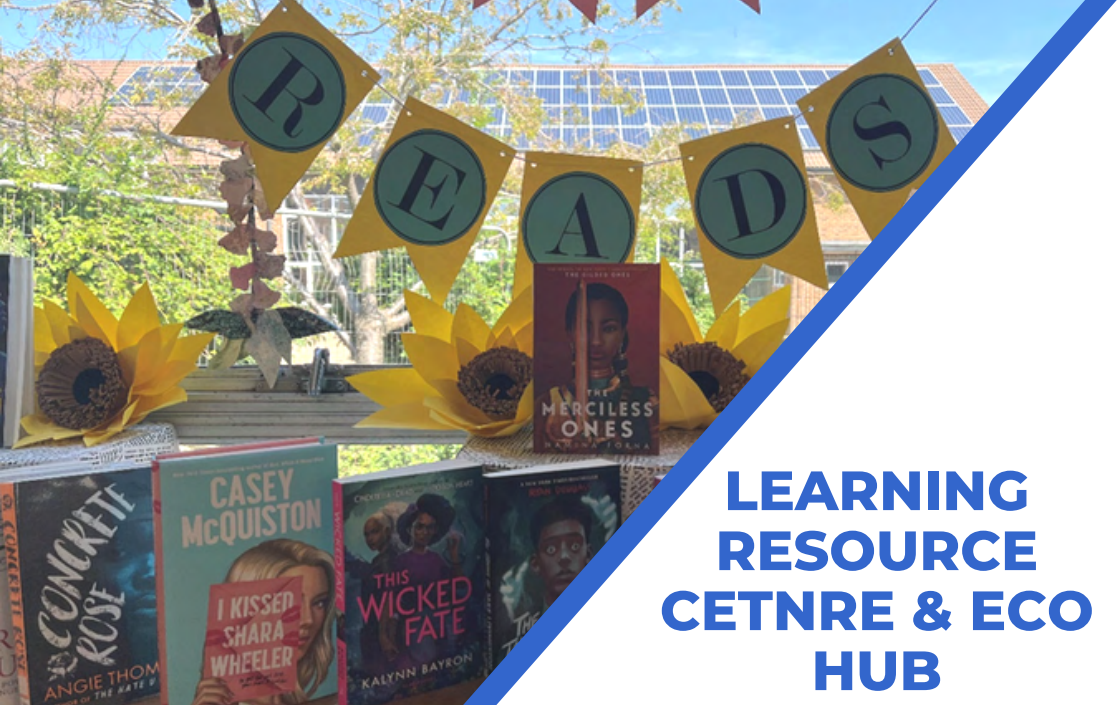
LEARNING SUPPORT UNIT & RONNIE THE THERAPY DOG

The Learning Support Unit (LSU) at King's Academy consists of our SENCo, Mrs Malik and an experienced team of Teaching Assistants with a variety of expertise in different areas. We work closely with the other departments in the school to create inclusive classrooms that allow all students with SEND to access the learning on offer, thus enabling them to reach their full academic potential. The department provides individual, group and classroom support in order to remove barriers to learning. Beyond the classroom, we are able to provide weekly targeted support and bespoke interventions to our high needs students during morning tutor time. In addition, there is daily Independent Learning support available after school where experienced staff will support students with their work. We also recognise that some students might need a more nurturing approach and for those students, we offer a safe place during break and lunch times. The sensory room is available to students with sensory needs and for those who need a space to self regulate.

Our intention is to ensure that all our students are supported to become independent learners and active members of our academy community.



Due to Ronnie's sweet nature and her love of people, she has begun her role as our therapy dog. Ronnie comes into school twice a week on Tuesdays and Thursdays, greeting our students before lessons begin. Her day involves spending time with students either on a 1:1 basis with Miss Beattie, joining intervention groups, playing with students during break and lunch times, being available to listen and give support in the way of cuddles as well as finishing the day with our students staying to complete their independent learning. Of course Ronnie is still a very young dog, her well being is paramount to her role here, so she has lots of breaks throughout the day when she can relax, chew a toy or nap in our secure Eco building and garden. She can't wait to meet you all!



LEARNING RESOURCE CENTRE & ECO HUB

The learning resource centre is open to all our students throughout the day during break and lunchtimes. It provides a quiet environment for reading, borrowing books, research, private study and homework. With its range of fiction and non-fiction books, IT equipment and audio-visual material, it supports the work of all departments using all the modern means by which information and knowledge is transmitted.

Regular English lessons take place in the learning resource centre. The LRC currently runs two creative classes during lunchtimes, creative journaling and paper art. There is a regular book club meeting and a strong emphasis on creating a calm, relaxed wellbeing space for all our students.

We have established an enviable record of achievement in environmental work. There have been substantial improvements in our buildings but more importantly in our systems and the way we operate. We are proud to operate and learn from the following renewable and energy saving technologies: the photo voltaic (solar) panels, ground source heat pumps, wind turbine, biomass boiler, rain water harvesting, solar shading and LED motion sensitive lighting.

The current focus of our environmental work is conservation, improving biodiversity on our school site. Our Eco Hub site has plans for a wildflower meadow and nature pond for students to enjoy and learn from. The school currently produces 70% of its own energy!



*I'm proud to be part of
Ringmer and our Eco
Initiative. As a student, I
get a say in new projects.*

KAR Site Map



King's Academy Ringmer

Eco Hub

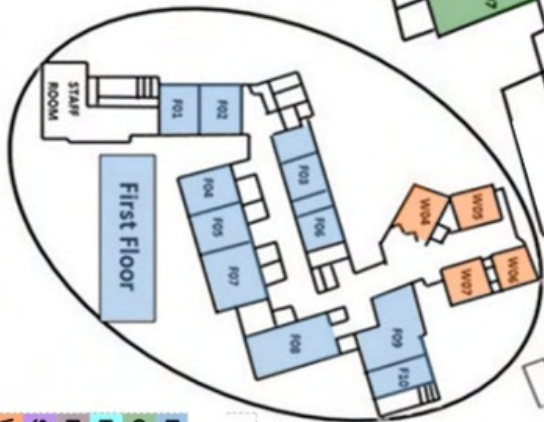
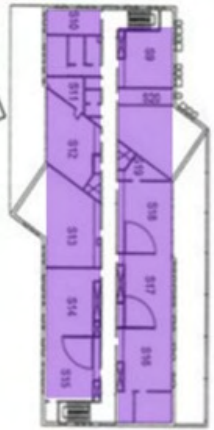
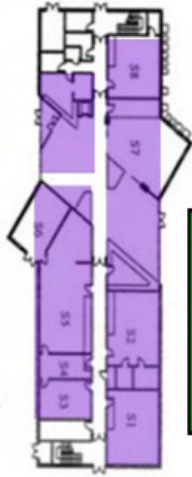
Tennis Courts

Clarke Block
(closed)

SWIMMING POOL
GYM
LRC

HALL
Main Entrance
Dining Hall
M01
M02

Playing Fields & 3G pitch



Colour Code

| | |
|----|------------------------|
| F | First Floor |
| G | Ground Floor |
| H | Hall |
| PE | Gym |
| S | Stephen Green Building |
| W | The Wakely Building |



King's Academy Ringmer



Admissions - King's Academy Ringmer

Admissions are still the responsibility of East Sussex County Council and full details of our Admissions Policy are available upon request at the school or from our school website.

Safeguarding Statement

King's Academy Ringmer is committed to safeguarding and promoting the welfare of children and young people.